



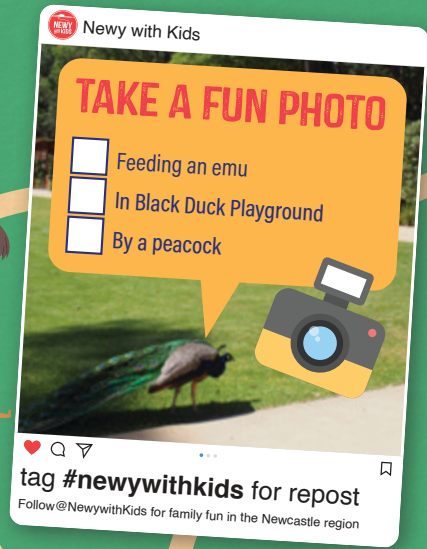
BLACKBUTT RESERVE



SCAVENGER HUNT BLACKBUTT RESERVE AT CARNLEY AVENUE

Explore the area marked on the map to find the answer to each question. Then use those answers to solve the mystery phrase.

HAVE FUN



- 1 Wildlife exhibits
- 2 Picnic shelter
- 3 Kiosk
- 4 Pond
- 5 Black Duck Playground
- 6 Creek

SCAVENGER HUNT

 While you're searching keep your eyes open! How many items can you find?

Pond



Bird



Emu



Toadstool



Peacock



Tree



Barbecue



Kangaroo



Koala



Grass



Duck



Picnic shelter

GOOD LUCK!

CAN YOU SOLVE THE MYSTERY PHRASE?

Blackbutt Reserve is now a recreational area in Newcastle. However, it was previously an industrial worksite owned by the Scottish-Australian Mining Company back in the 1800s.

What business did they operate in this area?

1 2 3 4 5 6 7 8

NEED A HINT OR WANT TO CHECK YOUR ANSWERS? VISIT NEWYWITHKIDS.COM.AU/HINTS

We acknowledge the Awabakal and Worimi peoples who are the descendants of the traditional custodians of the land and waters within the Newcastle Local Government Area which are featured in this guide. We recognise their cultural heritage, beliefs and continuing connection to the land and waters and pay our respects to Elders past, present and emerging.

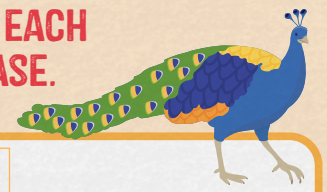


To view this map on Google Maps, use the camera on your phone and scan this unique QR code.

The Newy with Kids Scavenger Hunt series has been supported by the City of Newcastle's Boost Your Place placemaking grant.



EXPLORE THE AREA MARKED ON THE MAP TO FIND THE ANSWER TO EACH QUESTION. THEN USE YOUR ANSWERS TO SOLVE THE MYSTERY PHRASE.



1 Start your visit to Blackbutt Reserve with a stroll through Blackbutt wildlife enclosures. Enter the enclosed **Flight Aviary**. What cuddly marsupial lives here? _____

1 Head next to **Exhibit 2**. The creature that lives here makes "woof woof" calls and sounds like a small dog. What creature is it? _____

1 It's then onto **Exhibit 6**. Here you will find Black Cockatoos and Bush-Stone Curlews. Read the sign and answer the following question. Australia has often been labelled as the land of what? _____

1 In **Exhibit 8**, you'll find various exhibits of reptiles including skinks, geckos, lizards and waterdragons. How many families of lizards are found in Australia? _____



2 In this large grassy area, you will spot four picnic shelters in a row. What is the name of the picnic shelter closest to the Blackbutt Reserve Kiosk? _____

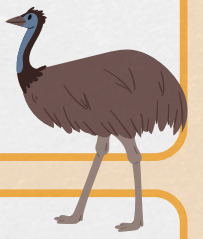
3 Look at the mural on the side of the Blackbutt Reserve Kiosk (closest to the picnic shelter). What is the creature in the lower-right corner? _____



4 Head to the nearby pond. This is a habitat for turtles, eels, ducks and other bird species. Here you will see a sign with a duck on it. What are the words on the sign? _____

5 Have some fun at the Black Duck Playground. This playground designed for kids aged 2 to 10 has lots of fun play equipment. How many slides are there? _____

5 How many spotted toadstools are there at this playground? _____



6 From the playground, cross the bridge back to the grassy area and read the sign. What is the name of the creek that you just passed? _____ _____